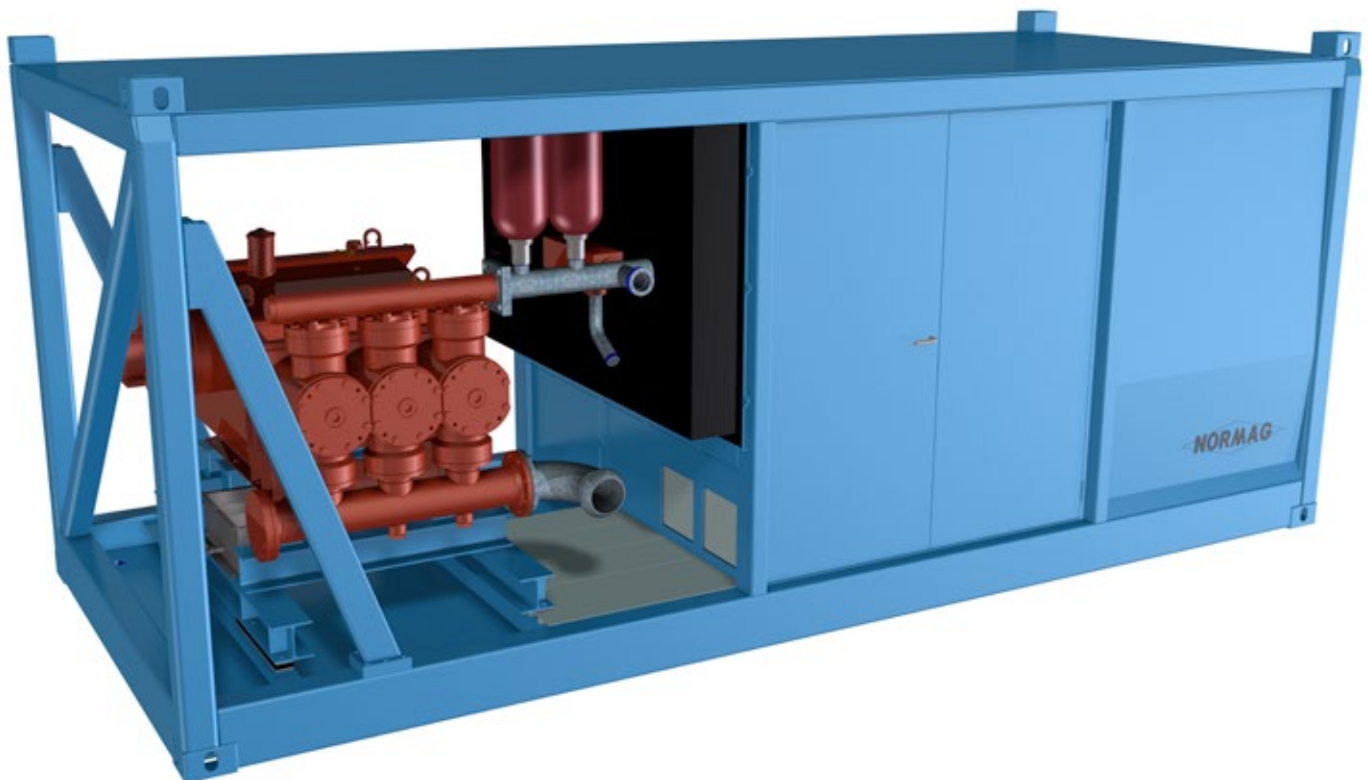


Our vision is to design and produce high-end equipment for the trenchless technology industry which provides the customer the highest production rates at the lowest cost solution.

We design each individual installation as being part of the integral production process that drilling actually is, resulting in less operating actions thus minimizing need for human labour. Choosing only premium components of the highest quality reduces need for maintenance, repair and resulting cost. All this, combined with a keen economical transport solution, hands our customers the tools for having the edge over the competition at any job.



NORMAG HIGH-PRESSURE PUMP 250 - NHP 250C

The 'Normag High-pressure Pump' is a semi-standalone unit. The Trinity triplex pumps are designed to the latest insights and offer an uncompromised power to weight ratio. All Trinity triplex pumps offer a standard 80 bar maximum work pressure with the largest possible liner size at maximum flow rate. The pump is fully hydraulically driven giving an uncompromised regulation of pump speed, flow rate and work pressure. Fully in-house manufactured!

NORMAG[®]

NORMAG HIGH PRESSURE PUMP NHP 250C

Features NHP 250C

- Requires no dedicated operating personnel
- Wired or wire-less remote control with 7" touch screen for full data read-out
- Suction port pressure over watch
- Active & passive pulsation damping on pressure and suction line
- High-pressure line secured with reset relief valve
- Easy access for maintenance and cleaning



Technical Data

Rated flow	1.200 up to 3.000 l/min (320 - 790 Gal/min)
Rated pressure	45 up to 120 bar (650 - 1.740 PSI)
Mud pump	Trinity triplex TP-250 HDD
Drive	2x SAI hydraulic motor mounted directly to the crank axle
Liner wash pump	premium brand 230V centrifugal bilge pump
Line connections	Suction Perrot/Kardan 6", pressure oilfield hammer union 3"-4"
Powered	Deutz 360 kW (480 hp)
Emission	To latest EU/EPA regulations
Construction type	ISO container meeting CSC requirements
Transport dimensions	6,1 x 2,5 x 2,6 m (20' x 8'2" x 8'6")
Transport weight	13.5000 kg (29.800 lb)
Finish	Shot blast to bare metal, Epoxy/PU paint system coating

Options

Wire-less remote control

Automatic shut off valve in suction line

On-board pre-pressure pump Mission centrifugal with mechanical seal - 22 kW (30 hp)

Customer specific flow and pressure combinations possible

Other engine brand or emission regulations

Executed as skid or hook/cable loader container

Specifications subject to change without notice